



CUSTOMER ASSEMBLY INSTRUCTIONS FOR ARI 5135/5235 VENTED OUTLET CAP

TOOLS REQUIRED

3/8" box wrench
Phillips screwdriver
Wire cutters
Needle nose pliers
Thread locking fluid (Loctite #263)
Bolt cutters
File

REMOVAL



- 1) Remove the repair link or split ring that is attaching the chain to the cap retainer using bolt cutters.



- 2) Loosen the two eyebolts and swing them to the side. Remove the outlet cap.



- 3) Unscrew both eyebolts completely. Remove them and the J bolts from the gate. If the J bolts are retained with a cotter pin, use needle nose pliers to remove them.

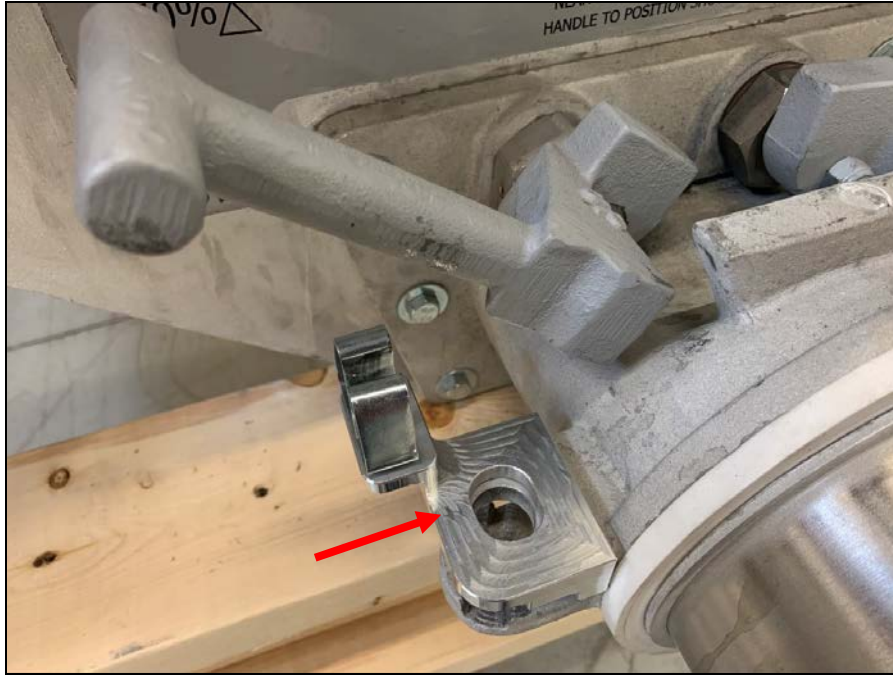


INSTALLATION

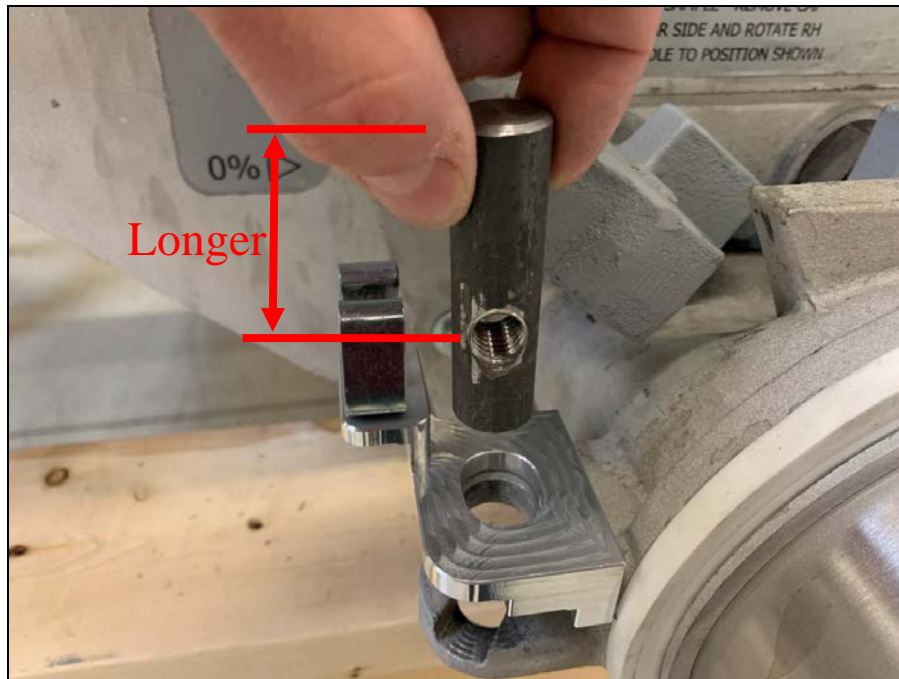
- 1) Using a 3/8” wrench and Phillips screwdriver, attach the SS clip to the bracket using the supplied screw and lock nut. Do not fully tighten the fastener. The clip should be able to move for now.



- 2) With the left side handle in the open position, slide the assembled bracket over the ear of the outlet end adapter. If the bracket is difficult to install, use a file to clean up the undercut of the bracket and the face surfaces of the ear.



- 3) Install one of the supplied pins through the holes in the ears of the outlet end adapter. Note that the longer length of the pin with regards to the threaded hole should be going up. Thread one of the previously removed eyebolts into the hole of the pin.



- 4) Install the remaining pin and eyebolt into the ears of the outlet end adapter on the right side. Note that the orientation of the pin should be the same as the step above.



- 5) Install the new vented outlet cap and secure it with the eyebolts. Lower the handle on the left side. Center the SS clip to the handle and tighten the Phillips screw and lock nut tool tight.



- 6) Reattach the chain to the cap retainer using the supplied threaded quick link. Apply 2-3 drops of thread locking fluid (Loctite #263) to the threads. Use a 3/8" wrench to secure tool tight.



- 7) Repeat the removal and installation process on the opposite side of the gate. Apply the supplied decals to the side of the hopper car above the vented outlet cap on both ends of the gate. Be sure to clean the surface prior to application.

